



**Custom**Cordless  
Roman**Style**  
**Fabric**Shade

owner's handbook





## INSTALLATION INSTRUCTIONS

### Step 1. Check Package Contents

Missing part? Call 1-800-264-1190

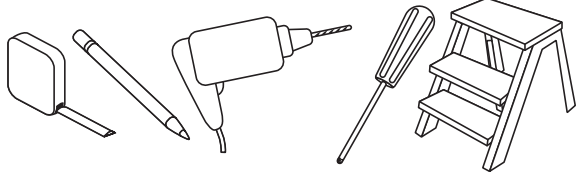
Mounting hardware kit includes the following:

Part	Quantity
Mounting Bracket	2 (for shades 24" to 36" wide)
	3 (for shades 36 $\frac{1}{8}$ " to 54" wide)
	4 (for shades 54 $\frac{1}{8}$ " to 84" wide)
1 $\frac{1}{8}$ " Screws	2 per bracket
Control Handle (attaches to bottom rail)	1

**Note:** one extra screw of each noted size is included for convenience

### Step 2. Tools Required

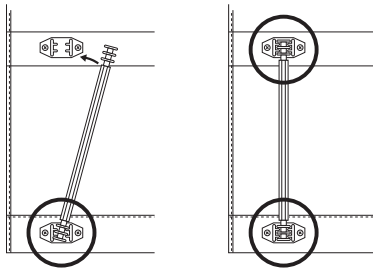
Screwdriver, tape measure, pencil, drill, step ladder.



**Note:** use #6 plastic anchors for dry wall or plaster mounting (not included)  
Drill Bits: for screws, use a 3/32" drill bit - for wall anchors, use 1/4" drill bit.

### Step 3. Attach Pleat Stiffeners

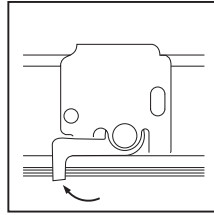
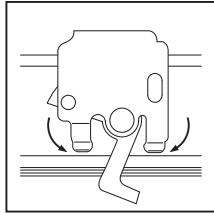
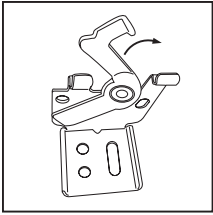
If the Pleat Stiffeners are not pre-attached, snap them onto the bottom hem as illustrated, by pressing down firmly on each end of each stiffener. Do not press down in the center of the stiffener as it can break. The bottom pleat must have rigidity in order for the shade to function properly.



### Step 4. Bracket Location and Installation

Your shade may be installed either inside the window frame or outside the window frame.

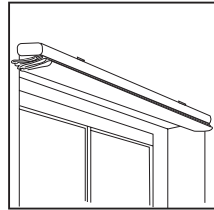
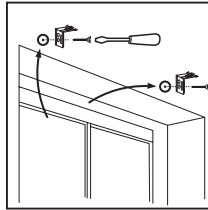
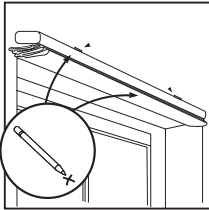
A mounting bracket should be positioned about 1" to 6" from each end of the head rail. For wider shades that require 3 or more brackets, these should be spaced evenly between the two outermost brackets. Always position the brackets such that there is no interference with the cords and mechanisms inside the head rail. The procedure outlined below will assure proper bracket placement.



To attach the brackets the locking arm should be facing out. Then position the bracket so that it engages the inner front and inner back of the bracket, and then push the locking arm inward to lock it in place.

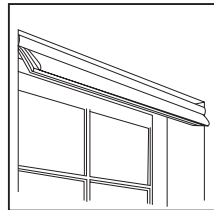
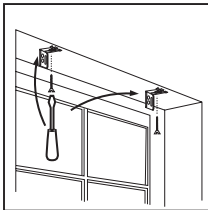
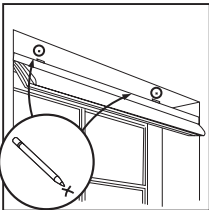
#### For Outside Mounting:

Attach the brackets to the head rail as described above. Hold the shade level at the height desired and center it over the window opening. Mark the exact location of each bracket with a pencil. Remove the brackets from the head rail and position the top of each bracket at the marked location and screw each bracket into the wall or window molding using the 1½" screws, pre-drill the screw holes using a 5/64" drill bit.



#### For Inside Mounting:

Clip the brackets onto the head rail as described above. Hold the shade in place and make a pencil mark at the rear of each bracket where it contacts the inside of the window frame. Remove the brackets from the head rail and align them with the marks. Attach each bracket using the 1½" screws, pre-drill the screw holes using a 5/64" drill bit.



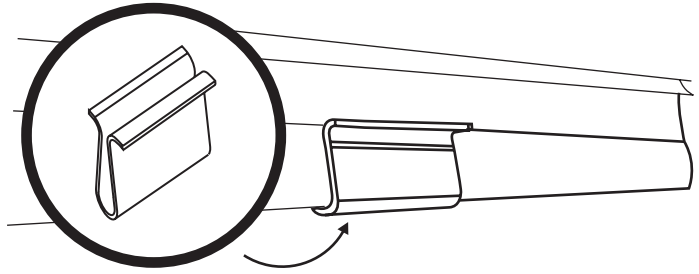
#### Step 5. Securing the Head Rail

Place the head rail on the brackets as described in Step 4 above, and lock in place. Check carefully to assure that each bracket is properly secured.

#### Step 6. Attach Handle / How to Operate

Attach the handle to the bottom of the shade as illustrated. The handle is designed to minimize contact with the shade fabric. Always raise and lower the shade slowly to assure that the fabric gathers neatly.

To lower the shade: grip the handle and slowly pull straight down.  
To raise the shade: put one hand under the handle (palm facing up) and lift slowly until the desired height is reached.



#### **IMPORTANT**

Always push and pull at the center of the shade to assure that the bottom of the shade remains even (i.e. parallel to the top of the shade). If the shade becomes uneven, slowly pull it all the way down, and then lift to the desired position. If necessary, reach behind the shade and manually pull the cording slowly out of the head rail until the bottom of the shade is level.

### **Cleaning your Shades**

To clean the shade fabric, use a feather duster or vacuum lightly using the soft brush attachment.

For 100% Polyester, Cotton/Poly blends and 100% Cotton or 100% Linen fabrics you may: Spot clean with warm soapy water using mild detergent and a clean sponge. Air dry, and then steam or iron.

### **Ironing**

100% Polyester: If necessary, steam polyester or gently iron on a low heat setting to remove stubborn wrinkles. 100% Polyester fabrics release wrinkles easily. Steam or iron on the Polyester / Synthetic Fabrics setting (Low), but be aware that Polyester will melt if the iron is too hot.

Cotton/Poly blends: If necessary, gently iron on a Blended Fabric (Medium) setting to remove stubborn wrinkles.

100% Cotton and 100% Linen: If necessary, gently iron on a Cotton (High) setting to remove stubborn wrinkles.

## **Replacement Parts**

In the event that replacement parts are ever needed, you may call:  
1-800-264-1190

Please be sure to provide the following information, if possible:

- The complete model or catalog number of your product
- A description of the product
- A description of the part needed

## **LIMITED LIFETIME WARRANTY**

The enclosed product is warranted to the original residential retail purchaser as long as the product remains in the original window

### **Covered:**

Lifetime: Entire product against manufacturing defects (i.e. a flaw in the product design, materials, or workmanship that causes the product to no longer function)

5 years: All fabric

### **Not Covered:**

Normal Wear and Tear

Any product that fails due to: • abuse • exposure to salt air

- improper installation • accident • extraordinary use
- improper operation • alterations • improper cleaning
- misapplication • damage from pests/insects/pets
- improper handling • misuse

**Costs associated with:** • product removal • transportation to and from the retailer • brand label removal • product re-measure • incidental or consequential damages • product reinstallation • shipping

In the event there are multiple blinds/shades in the same room, only the defective blind/shade will be replaced.

**To Report Shipping Damage:** If damage occurred during shipping, call place of purchase and report within 7 calendar days or else you may be denied credit for your damaged product.

**To Obtain Service:** If you suspect this product has a manufacturing defect in materials or workmanship: 1. Locate the sales receipt  
2. Call place of purchase. Any unauthorized returns will not be accepted.

**Warranty Remedy:** THIS SHALL BE YOUR SOLE REMEDY UNDER THIS LIMITED WARRANTY.

If this product is found to have a manufacturing defect in materials or workmanship, we will (at our discretion) do one of the following:

- repair the product • replace the product
- refund the cost of the product

Colors vary from lot to lot and may not exactly match sample swatch or previous purchases.

Discontinued items or color selections will be replaced with the closest equivalent current product.

### **YOUR RIGHTS UNDER STATE LAW:**

This lifetime limited warranty gives you specific legal rights, and you may have other rights, which vary from state to state. Some states do not allow limitations on how long a warranty lasts, so the above limitations may not apply to you. No agent, representative, dealer, or unauthorized employee has the authority to increase or alter the obligation of this warranty. This lifetime limited warranty supersedes any previous versions.

For all questions, please call (800) 264-1190  
Hours of operation are 8:00am to 5:00pm CST









**Cortina** Tipo  

---

**Romana**  

---

Inalámbrica  

---

**Personalizada**

manual del usuario





## INSTRUCCIONES DE INSTALACION

### Paso 1. Cerciórese del Contenido del Paquete

Si falta alguna pieza, por favor comuníquese con el 1-800-264-1190

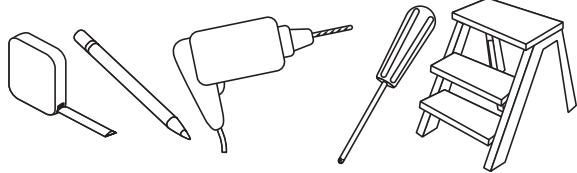
El kit de montaje incluye las siguientes piezas:

Parte	Cantidad
Soportes de Montaje	2 (cortinas de 24" a 36" de ancho)
	3 (cortinas de 36½" a 54" de ancho)
	4 (cortinas de 54½" a 84" de ancho)
Tornillos de 1½"	2 por soporte
Manija de Control (Se adhiere al riel inferior)	1

**Nota:** para su conveniencia, se ha incluido un tornillo extra

### Paso 2. Herramientas Requeridas

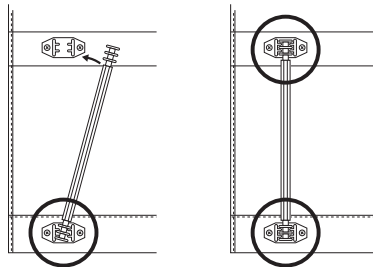
Destornillador, cinta métrica, lápiz, taladro y escalera.



**Nota:** use tarugos de plástico #6 para paredes de drywall o yeso (no incluidos)  
Brocas: para tornillos use una broca de 3/32" - para tarugos use una broca de 1/4".

### Paso 3. Fije los Refuerzos de Doblamiento

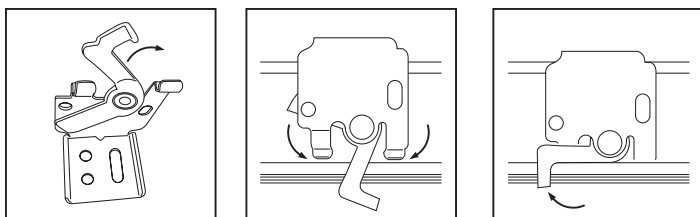
Si los refuerzos no están previamente instalados, abróchelos al dobladillo tal y como se ilustra, presionando firmemente en cada extremo del refuerzo. No presione en el centro del refuerzo pues podría quebrarlo. El dobladillo inferior debe estar rígido para que la cortina funcione debidamente.



### Paso 4. Ubicación e Instalación de Soportes

Su cortina puede instalarse ya sea por dentro o por fuera del marco de la ventana.

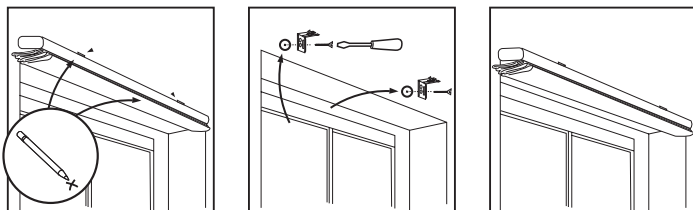
Un soporte de montaje deberá ubicarse entre 1" a 6" de cada extremo del riel principal. Para cortinas más anchas que requieren de 3 o más soportes, estos deben distribuirse equitativamente entre los soportes de los extremos. Acomode los soportes de manera que no interfieran con las cuerdas ni los mecanismos dentro del riel superior. El siguiente procedimiento le asegurará una ubicación apropiada de los soportes.



Para fijar los soportes, el brazo de bloqueo debe estar girado hacia afuera. Coloque los soportes en el riel de manera que enganchan la parte frontal primero y luego la parte posterior, luego gire el brazo de bloqueo hacia adentro para asegurar el soporte en su sitio.

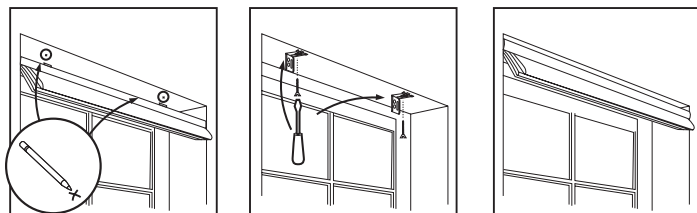
#### Para Montaje Exterior:

Luego que los soportes están fijos al riel, sostenga la cortina nivelada a la altura deseada y céntrala sobre la apertura de la ventana. Marque la ubicación exacta de cada soporte con un lápiz. Remueva los soportes del riel y ubique la parte superior de cada soporte en cada una de las marcas y atorníllelos a la pared o moldura usando los tornillos de 1 1/8", perforo los agujeros con una broca de 5/64".



#### Para Montaje Interior:

Abroche los soportes como se describió anteriormente. Sostenga la cortina en su lugar y marque la parte posterior de cada soporte donde hacen contacto con la parte interior del marco de la ventana. Remueva los soportes y alinéelos con cada una de las marcas. Fije cada soporte usando los tornillos de 1 1/8", perforo los agujeros con una broca de 5/64".



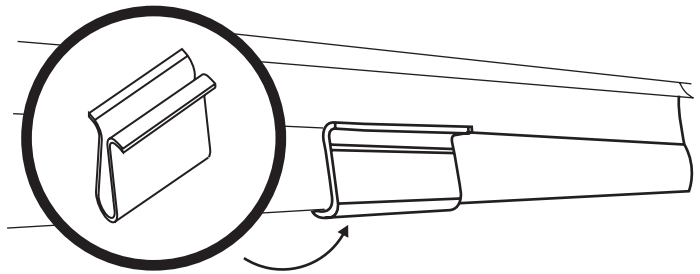
#### Paso 5. Aseguramiento del Riel Superior

Acomode el riel superior tal y como se describió en el paso 4 y asegúrelo en su sitio. Verifique cuidadosamente que cada soporte esta debidamente asegurado.

#### Paso 6. Coloque la Manija / Cómo Operar la Cortina

Fije la manija a la parte inferior de la cortina como se ilustra. La manija está diseñada para minimizar el contacto con la tela de la cortina. Siempre suba y baje la cortina lentamente para garantizar que la tela se recoge bien doblada.

Para bajar la cortina: agarre la manija y hálcela lenta y suavemente hacia abajo. Para alzar la cortina: ponga una mano debajo de la manija (palma mirando hacia arriba) y álcela suavemente hasta la altura deseada.



#### **IMPORTANTE**

Siempre empuje y hale al centro de la cortina para asegurar que la base siempre esté nivelada (que esté paralela con el filo superior de la cortina). Si llegase a desnivelarse, lentamente hálcela completamente hacia abajo y luego álcela y llévela a la altura deseada. Si es necesario, alcance por detrás de la cortina las cuerdas y manualmente hálcelas despacio por fuera del riel hasta que el fondo de la cortina este nivelado.

#### **Limpieza de su Cortina**

Para limpiar la tela de la cortina, use un plumero o use la aspiradora usando un cepillo suave.

Para telas 100% Poliéster, Algodón / Poli-Mezclas y 100% Algodón o 100% Lino, usted puede: limpiar manchas con agua tibia y un poco de jabón detergente suave aplicándolo con una esponja suave. Deje que se seque y luego puede usar plancha (ver a continuación) para quitar las arrugas.

#### **Planchado**

100% Poliéster: Si es necesario, use vapor o plancha en un nivel bajo de calor para remover arrugas. Las arrugas en telas 100% Poliéster son fáciles de remover. Use vapor o planchado en nivel para telas de Poliéster / telas Sintéticas (bajo), esté consiente que el Poliéster se derrite si la plancha está demasiado caliente.

Algodón / Poli-Mezclas: De ser necesario use plancha en el nivel de Mezclas de Fábrica (medio) para remover las arrugas.

100% Algodón y 100% Lino: De ser necesario, use plancha en el nivel de Algodón (alto) para remover las arrugas.

## REPUESTOS

Si por algún motivo llegara a necesitar repuestos llame al 1-800-264-1190.

Asegúrese de tener a mano la siguiente información:

- El modelo completo o el número del producto en el catálogo.
- Descripción del producto.
- Descripción de la parte que necesita

## GARANTÍA DE POR VIDA - LIMITADA

Este producto goza está garantizado al comprador original y mientras siga instalado en la misma ventana.

### Lo que cubre:

De por Vida: El producto entero contra defectos de fabricación (ej.: falla en el diseño del producto, materiales o manufactura que causen que el producto no funcione más)

5 años: La tela

### Lo que no cubre:

Uso normal.

Cualquier producto que falla debido a: • abuso • exposición a aire salino • instalación inapropiada • accidente • uso extra-ordinario • operación inapropiada • alteraciones • limpieza inapropiada • aplicación errónea • daño causado por pestes/insectos/mascotas • manipulación inapropiada • uso inadecuado

**Costos asociados con:** • remoción del producto • transporte de o hacia almacén • remoción de la marca • volver a medir el producto • daños incidentales o derivados • reinstalación del producto • envío

En caso que se trate de múltiples cortinas/persianas en la misma habitación, solo la que esté defectuosa será reemplazada.

**Para reportar un daño en el envío:** si el daño ha ocurrido durante el envío, llame al lugar donde la adquirió y reporte dentro de los siguientes 7 días calendario de recibido el producto o sino podría negarse el crédito por el daño.

**Para obtener servicio:** si sospecha que este producto tiene defectos en materiales o manufactura: 1. localice el recibo de compra 2. llame al lugar donde adquirió el producto. No se aceptarán devoluciones que no hayan sido previamente autorizadas.

**Garantía de Reparación:** ESTA SERA SU UNICA REPARACION BAJO LOS TERMINOS DE ESTA GARANTIA.

Si se encontrase que este producto tiene un defecto de materiales o manufactura, haremos lo siguiente ( a nuestra discreción):

• reparar el producto • reemplazar el producto • devolver el costo del producto.

Los colores varían entre diferentes lotes de producción y podrían no coincidir con muestras o compras anteriores.

Productos discontinuados o colores serán reemplazados con su equivalente más cercano.

## SUS DERECHOS SEGUN SU ESTADO:

Esta garantía de por vida y limitada le da derechos legales específicos, pero usted también podría tener otros derechos que varían según el estado donde resida. Algunos estados no permiten limitaciones en cuanto a la duración de la garantía, de manera que las limitaciones especificadas anteriormente podrían no aplicar.

Ningún agente, representante, distribuidor o empleado tiene la autoridad de incrementar o alterar las obligaciones de esta garantía. Esta garantía reemplaza cualquier versión anterior.

Para preguntas, llame al (800) 264-1190  
Horas de Operación entre 8:00am a 5:00pm CST

Cortina  
**Romana**  
Inalámbrica





# Installation Instructions for CUSTOM ROMAN SHADE with CORD CONTROL

## Mounting hardware kit includes the following:

Part	Quantity
a. Mounting Brackets	2 (shades up to 36" wide) 3 (shades 36" to 48" wide) 4 (shades 48" to 96" wide) 5 (shades 96" to 120" wide)
b. 1-1/4" Screws	2 (shades up to 36" wide) 3 (shades 36" to 48" wide) 4 (shades 48" to 96" wide) 5 (shades 96" to 120" wide)
c. 3/4" Screws	2 (shades up to 36" wide) 3 (shades 36" to 48" wide) 4 (shades 48" to 96" wide) 5 (shades 96" to 120" wide)

*Note: brackets are for Outside Mount installations only!*

*Note: 3/4" screws are for Outside Mount installations only!*

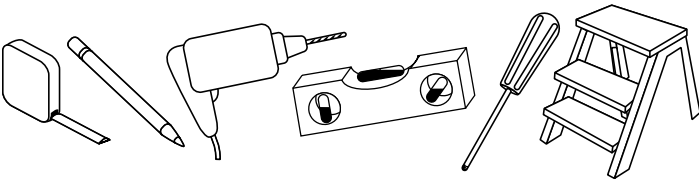
## Installation:

Wallboard or Plaster: use anchors specifically designed for hollow walls (not included).

Concrete, Stone, Brick: use a masonry drill bit and anchors or screws specifically designed for masonry (not included).

## Tools Required:

Pencil, tape measure, level, screw driver, step stool, drill.



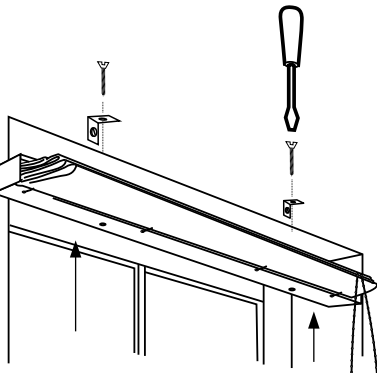
## For Outside Mounting

One bracket should be positioned about 2" to 6" from each end of the head rail. For wider shades that require 3 or more brackets, these should be spaced evenly between the two outermost brackets. Hold the shade in place and mark the desired bracket locations with a pencil.

The brackets must be level – use a Spirit Level if necessary to assure proper alignment.

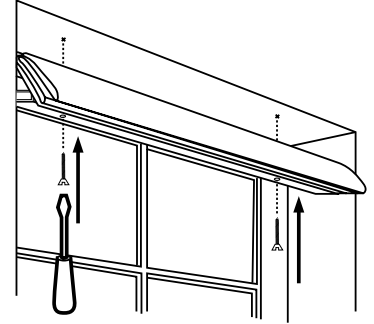
The brackets will be attached to the top of the head rail, so attach the brackets to the wall or window frame first. Pre-drill the mounting holes using a 5/64" drill bit, and then screw the brackets in place.

Place the head rail against the brackets as illustrated – center the shade over the window opening – then mark the location of each mounting hole on the head rail. Pierce the fabric at the hole locations using the tip of a screw, then pre-drill the mounting holes using a 5/64" drill bit. Attach the shade to the brackets using the 3/4" screws provided.



## For Inside Mounting:

Mounting holes are pre-drilled in the Head Rail. Screw the 1/4" screws into the head rail until the tips of the screws extend very slightly beyond the top of the head rail. Align the front of the shade with the front edge of the window opening (or position as desired), making sure that the shade is centered in the window opening – then push up on the screws so that the screw heads leave tiny impressions in the top of the window frame. Now, use the impressions as a guide and pre-drill the mounting holes using a 5/64" drill bit – then screw the shade in place.



## Attach the Safety Cord Guide

The cord guide must be attached per these instructions in order for your shade to function properly. The Cord Guide is pre-attached to the Cord Control, and must be attached inside or outside the window opening, to the window frame or wall as you prefer.

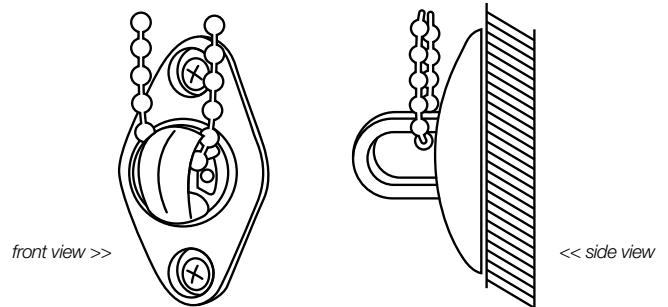
The base of the Cord Guide can be attached vertically, horizontally or at an angle. Note that the 'U' shaped guide that the chain passes through swivels and can be set in any position to facilitate smooth operation.

Attach the Cord Guide with the 1/4" screws provided. Pre-drill the screw holes using a 3/32" drill bit if mounting to a solid surface. If the Cord Guide is attached to hollow drywall, please use the wall anchors provided. Use a 1/4" drill bit to drill the holes for the anchors.

## DO NOT PUT TENSION ON THE CORD/BEAD CHAIN!

Install the Cord Guide such that the cord hangs loosely – this optimizes the performance of the clutch, and assures that the Cord Connector will pass through the Cord Guide with relative ease. Do not twist or cross the control cord/bead chain. In order to position the base properly, adjust the cord so that the Cord Guide is at the bottom of the cord loop and let it hang freely. Compress the spring by hand so that the chain moves freely through the 'U' channel.

Hold the tension device and the bracket against the window frame or wall and then move it upward at least 1/4" - mark the position of the bracket (mark the location of the screw holes with a pencil). Insert and secure two screws through the holes in the base of the Cord Guide.



## How to Operate Cord Control Shades

Pulling gently on the cord in one direction raises the shade; pulling it in the other direction lowers it. On shades where the fabric rolls against the window, the front cord lifts the shade. On shades where the fabric rolls toward the room, the rear cord lifts the shade.

---

### Care Instructions

The packaging and shipping of soft treatments frequently results in minor wrinkling of the fabrics used.

There are different characteristics and handling needs for the variety of fabrics offered in this program.

Please refer to the descriptions below for guidance on how to remedy minor wrinkles upon delivery.

First, allow all items to hang for a few days so wrinkles relax and begin to fall out.

#### *Silk fabrics:*

- Natural irregularities give the fabric its unique and desired character. The appearance of slubs, nubs, loops and barre ridges are universally accepted as normal and should not be considered defects.
- If necessary, steam silk to remove stubborn wrinkles. Please note that a good quality steamer is needed so water spots won't form from water spitting out from the steaming device.

#### *Rayon/Poly blends:*

- If necessary, steam rayon/poly to remove stubborn wrinkles. Please note that a good quality steamer is needed so water spots won't form from water spitting out from the steaming device.

#### *100% Polyester:*

- If necessary, steam polyester or gently iron on a low heat setting to remove stubborn wrinkles. 100% Polyester fabrics release wrinkles easily. Steam or iron on the Polyester / Synthetic Fabrics setting (Low), but be aware that Polyester will melt if the iron is too hot.

#### *Cotton/Poly blends:*

- If necessary, gently iron on a Blended Fabric (Medium) setting to remove stubborn wrinkles.

#### *100% Cotton and 100% Linen:*

- If necessary, gently iron on a Cotton (High) setting to remove stubborn wrinkles.

#### *General Cleaning Guidance:*

- Dry Cleaning is the best method to clean soiled soft window treatments.
  - However, on 100% Polyester, Cotton/Poly blends and 100% Cotton or 100% Linen you may: Spot clean with warm soapy water using mild detergent and a clean sponge. Air-dry and then steam or iron as guided above.
- 

## LIMITED LIFETIME WARRANTY

The enclosed product is warranted to the original residential retail purchaser as long as the product remains in the original window.

### **Covered:**

**Lifetime:** Entire product against manufacturing defects (i.e. a flaw in the product design, materials, or workmanship that causes the product to no longer function)  
5 years: All fabric

### **Not Covered:**

Normal Wear and Tear

Any product that fails due to: • abuse • exposure to salt air • improper installation • accident • extraordinary use • improper operation • alterations • improper cleaning • misapplication • damage from pests/insects/pets • improper handling • misuse

Costs associated with: • product removal • transportation to and from the retailer • brand label removal • product re-measure • incidental or consequential damages • product reinstallation • shipping

In the event there are multiple blinds/shades in the same room, only the defective blind/shade will be replaced.

**To Report Shipping Damage:** If damage occurred during shipping, call place of purchase and report within 7 calendar days or else you may be denied credit for your damaged product.

**To Obtain Service:** If you suspect this product has a manufacturing defect in materials or workmanship: 1. Locate the sales receipt 2. Call place of purchase. Any unauthorized returns will not be accepted.

**Warranty Remedy:** THIS SHALL BE YOUR SOLE REMEDY UNDER THIS LIMITED WARRANTY.

If this product is found to have a manufacturing defect in materials or workmanship, we will (at our discretion) do one of the following:

- repair the product • replace the product • refund the cost of the product
- Colors vary from lot to lot and may not exactly match sample swatch or previous purchases.

Discontinued items or color selections will be replaced with the closest equivalent current product.

### **YOUR RIGHTS UNDER STATE LAW:**

This lifetime limited warranty gives you specific legal rights, and you may have other rights, which vary from state to state. Some states do not allow limitations on how long a warranty lasts, so the above limitations may not apply to you. No agent, representative, dealer, or unauthorized employee has the authority to increase or alter the obligation of this warranty. This lifetime limited warranty supersedes any previous versions.

# INSTALLATION INSTRUCTIONS FOR CUSTOM ROMAN SHADES

## Mounting hardware kit includes the following:

Part	Quantity
a. Mounting Brackets	2 (shades up to 36" wide) 3 (shades 36" to 48" wide) 4 (shades 48" to 96" wide)
b. 1-1/4" Screws	2 (shades up to 36" wide) 3 (shades 36" to 48" wide) 4 (shades 48" to 96" wide)
c. 3/4" Screws	2 (shades up to 36" wide) 3 (shades 36" to 48" wide) 4 (shades 48" to 96" wide)
d. Cord Cleat	1 (includes 3/4" screws)

**Note:** 3/4" screws are for Outside Mount installations only – to attach the brackets to the head rail!

## Installation:

Wallboard or Plaster: use anchors specifically designed for hollow walls (not included).

Concrete, Stone, Brick: use a masonry drill bit and anchors or screws specifically designed for masonry (not included).

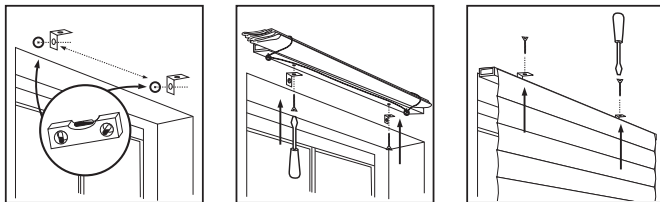
## For Outside Mounting

One bracket should be positioned about 2" to 6" from each end of the head rail. For wider shades that require 3 or 4 brackets, these should be spaced evenly between the two outermost brackets. The brackets must not interfere with the cord guides or cord lock or in any way impede the movement of the lift cords – therefore, we recommend that you hold the shade in place and mark the desired bracket locations with a pencil or marker.

The brackets must be level – use a Spirit Level if necessary to assure proper alignment. Pre-drill the mounting holes using a 5/64" drill bit, then screw the brackets in place.

For standard shades (lift cords concealed behind the face of the shade), place the head rail on top of the brackets – center the shade over the window opening – then mark the location of each mounting hole on the head rail. Pierce the fabric at the hole locations using the tip of a screw, then pre-drill the mounting holes using a 5/64" drill bit. Attach the shade to the brackets using the 3/4" screws provided.

For Cords-Forward shades, the screws will be attached to the top of the head rail – hold the shade against the inner top of the brackets, and then mark and drill the screw holes as described above; and drive the screws into the top of the head rail.



Standard

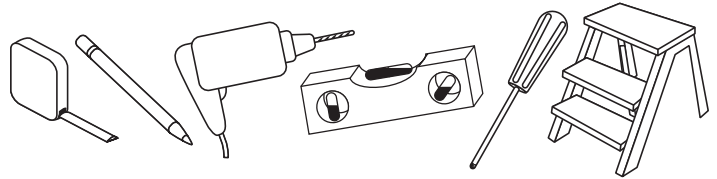
Cords-Forward

## For Inside Mounting:

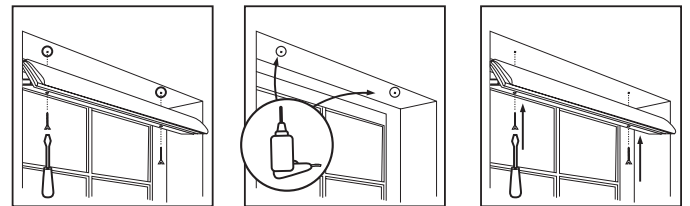
Mounting holes are pre-drilled in the Head Rail, so brackets are not required. Align the front of the shade with the front edge of the window opening (or position as desired), making sure that the shade is centered in the window opening. **Hold the shade cloth up and over the head rail**, and then pre-drill

## Tools Required:

Pencil, tape measure, level, screw driver, step stool, drill.

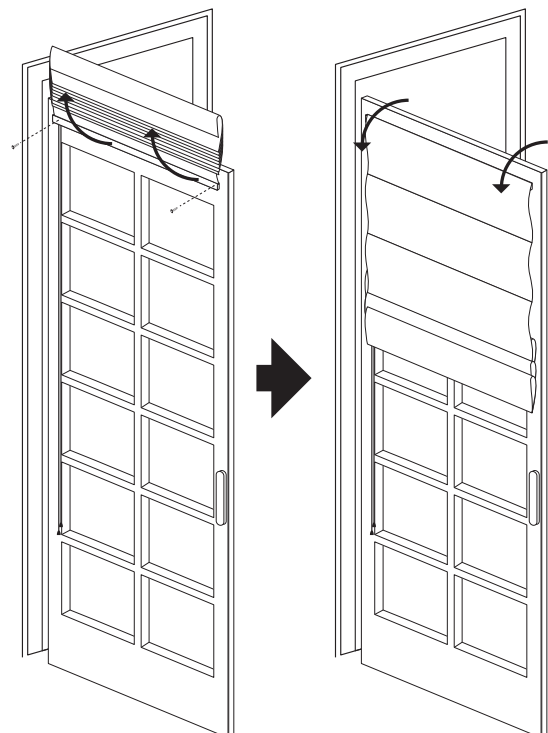


the mounting holes using a 5/64" drill bit – screw the shade in place using the 1-1/4" screws. A second set of hands makes this job much easier, so get a helper if possible.



## For Outside Mounting with Upended Head Rail

Mounting holes are pre-drilled in the Head Rail, so brackets are not required. Position the shade as desired over the window opening; making sure that it is level - use a Spirit Level if necessary to assure proper alignment. Hold the shade cloth up and over the head rail, and then pre-drill the mounting holes using a 5/64" drill bit - screw the shade in place using the 1-1/4" screws. A second set of hands makes this job much easier, so get a helper if possible.



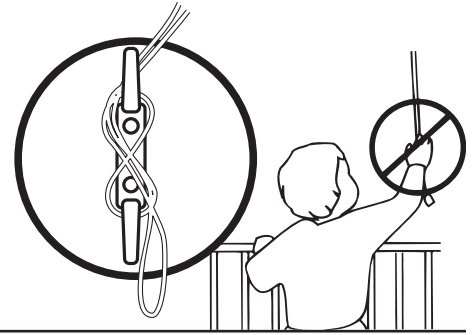
## Cord Cleat

Attach the Cord Cleat to the wall or window frame using the screws provided. Position the cleat high enough that it is beyond the reach of small children.

Whenever the shade is raised or partially raised, the lift cord should be wrapped around the secured Cord Cleat (see illustration).

### How to Operate

To raise or lower the shade, pull the lift cord slightly to release the cord lock. Adjust the shade to the desired height, then move the lift cords slightly toward the outside of the shade to lock in place.



---

## Care Instructions

The packaging and shipping of soft treatments frequently results in minor wrinkling of the fabrics used.

There are different characteristics and handling needs for the variety of fabrics offered in this program.

Please refer to the descriptions below for guidance on how to remedy minor wrinkles upon delivery.

First, allow all items to hang for a few days so wrinkles relax and begin to fall out.

### Silk fabrics:

- Natural irregularities give the fabric its unique and desired character. The appearance of slubs, nubs, loops and barre ridges are universally accepted as normal and should not be considered defects.
- If necessary, steam silk to remove stubborn wrinkles. Please note that a good quality steamer is needed so water spots won't form from water spitting out from the steaming device.

### Rayon/Poly blends:

- If necessary, steam rayon/poly to remove stubborn wrinkles. Please note that a good quality steamer is needed so water spots won't form from water spitting out from the steaming device.

### 100% Polyester:

- If necessary, steam polyester or gently iron on a low heat setting to remove stubborn wrinkles. 100% Polyester fabrics release wrinkles easily. Steam or iron on the Polyester / Synthetic Fabrics setting (Low), but be aware that Polyester will melt if the iron is too hot.

### Cotton/Poly blends:

- If necessary, gently iron on a Blended Fabric (Medium) setting to remove stubborn wrinkles.

### 100% Cotton and 100% Linen:

- If necessary, gently iron on a Cotton (High) setting to remove stubborn wrinkles.

### General Cleaning Guidance:

- Dry Cleaning is the best method to clean soiled soft window treatments.
- However, on 100% Polyester, Cotton/Poly blends and 100% Cotton or 100% Linen you may: Spot clean with warm soapy water using mild detergent and a clean sponge. Air-dry and then steam or iron as guided above.

---

## LIMITED LIFETIME WARRANTY

The enclosed product is warranted to the original residential retail purchaser as long as the product remains in the original window.

### Covered:

**Lifetime:** Entire product against manufacturing defects (i.e. a flaw in the product design, materials, or workmanship that causes the product to no longer function)

**5 years:** All fabric

### Not Covered:

Normal Wear and Tear

Any product that fails due to: • abuse • exposure to salt air • improper installation • accident • extraordinary use • improper operation • alterations • improper cleaning • misapplication • damage from pests/insects/pets • improper handling • misuse

Costs associated with: • product removal • transportation to and from the retailer • brand label removal • product re-measure • incidental or consequential damages • product reinstallation • shipping

In the event there are multiple blinds/shades in the same room, only the defective blind/shade will be replaced.

**To Report Shipping Damage:** If damage occurred during shipping, call place of purchase and report within 7 calendar days or else you may be denied credit for your damaged product.

**To Obtain Service:** If you suspect this product has a manufacturing defect in materials or workmanship: 1. Locate the sales receipt 2. Call place of purchase.

Any unauthorized returns will not be accepted.

**Warranty Remedy:** THIS SHALL BE YOUR SOLE REMEDY UNDER THIS LIMITED WARRANTY.

If this product is found to have a manufacturing defect in materials or workmanship, we will (at our discretion) do one of the following:

- repair the product • replace the product • refund the cost of the product

Colors vary from lot to lot and may not exactly match sample swatch or previous purchases.

Discontinued items or color selections will be replaced with the closest equivalent current product.

### YOUR RIGHTS UNDER STATE LAW:

This lifetime limited warranty gives you specific legal rights, and you may have other rights, which vary from state to state. Some states do not allow limitations on how long a warranty lasts, so the above limitations may not apply to you. No agent, representative, dealer, or unauthorized employee has the authority to increase or alter the obligation of this warranty. This lifetime limited warranty supersedes any previous versions.